

# Newsletter 30—03-05-21



## Weekly Services

**Breakfast Club**—A chance for children to come into school a little early, enjoy breakfast with friends and play and create before school starts. All Covid-Secure Procedures in place. Daily from 8:00 to 8:45 a.m. *Cost: £1.75 per session.*

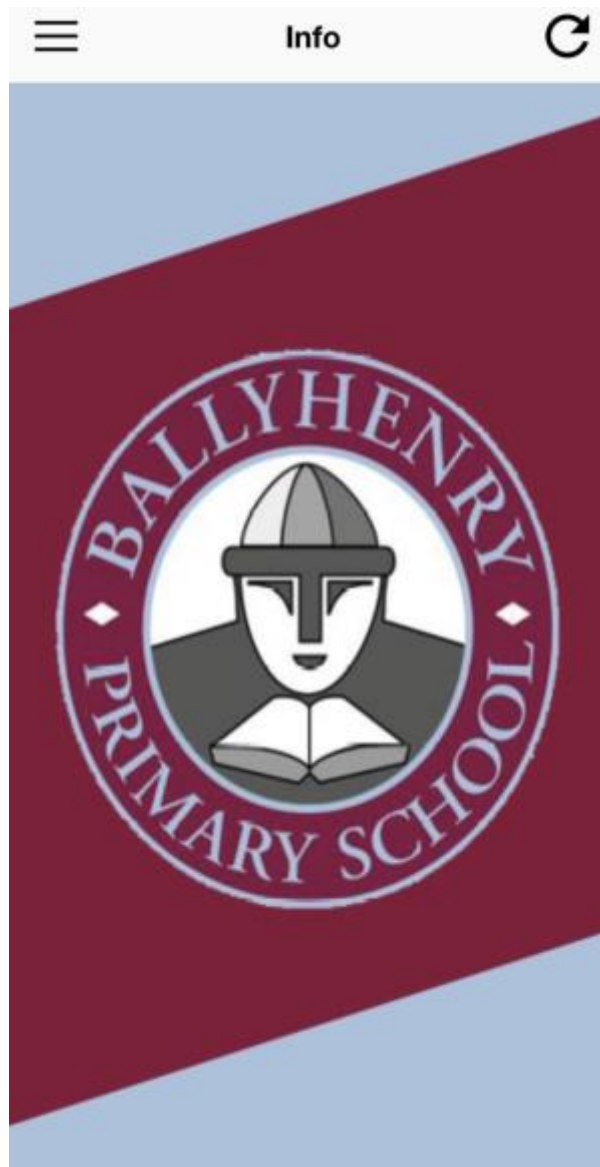
**Healthy Break**—School will provide a healthy break delivered to the classroom at your child's designated breaktime. Book via the app. *Cost: 30p/day*

**School Dinners**—School dinners are available daily. To keep everyone safe dinners are delivered and served in classrooms. There are hot meals on Mondays/Wednesdays/Fridays and a packed lunch can be provided on Tuesdays and Thursdays. Choices should be made via the embedded form or this link: <https://bit.ly/PackLunch20> Selections should be made by 9:00 p.m. on Sunday evening for each week. If your child is not entitled to Free School Meals you can by via the app. *Cost: £2.60/day*

**B'Happy**—Wrap-around care is available from 2:00 to 5:00 every week day with Covid-Secure Procedures in place. Children are provided with a snack and can play in their class bubbles. Bubbles are allowed to mix when the children are playing outside which they are able to do weather permitting. The dedicated B'Happy staff ensure that there afternoons are filled with crafts, games and fun. *Cost: £1.50/session*

**Ballyhenry App**—Available free from Google Play and App Store, get updates and reminders from school and submit homework for feedback via the app.

THIS IS ESSENTIAL AS THIS IS HOW WE WILL LET YOU KNOW IF A CLASS OR CLASSES NEED TO REMAIN AT HOME AND SELF-ISOLATE. If you are having trouble getting or using the app please let us know. We will help you sort it out!



### Dates for your Diary

- Tuesdays & Thursdays—P7 Cycling Proficiency
- Week Beginning 10th May—School Book Fair
- Wednesday 12th May—P2-P7 Football starts
- Friday 28th May—School closed Exceptional Closure
- Monday 31st May—School closed Bank Holiday

Holidays for 2021-2022 will be included at the end of the newsletter. You can keep track of the school holidays by following our school website: <https://www.myballyhenryps.co.uk>



### Nut Free School—We are Allergy Aware

We have recently been informed of two children (in P2 & P6) who have a severe food allergy to peanuts and nuts. It is important that there is a strict avoidance of these foods in order to prevent a life-threatening allergic reaction. We are asking for your help in order to provide all our pupils with a safe school environment. To help reduce the chance of this occurring, we are asking that you do not send your child to school with any products containing peanuts or nuts. It is the responsibility of whoever makes the lunch/snacks to ensure that there are no nuts or peanuts listed on the packaging. We will return items that may contain nuts/peanuts unopened. Remember that we are unable to share treats sent into school due to the allergy policy. This unfortunately includes birthday cakes and party bags. Thank you for your support with these procedures. It is essential that we are allergy aware.



### Illness

**DO NOT SEND YOUR CHILD TO SCHOOL IF THEY ARE SHOWING COVID-19 SYMPTOMS:**

- a new continuous cough
- fever

- **loss of taste/smell.**

If anyone in your household is displaying symptoms, your child should remain at home. This is in keeping with the government guidance for Coronavirus. You should let the school know as soon as you can that there is someone at home that is unwell. We will then work with you, the Education Authority and the PHA to determine what should happen next. Anyone who has had a traceable contact with someone who has tested positive, must remain at home for the 10 day isolation period even if they have tested negative.

Remember we can provide lots of support if your child is off isolating. Work will be provided on Teams, we can arrange zoom sessions and a food parcel can be delivered if your child is entitled to free school meals.

If your child is ill, it is extremely important that you let us know by either completing the absent note on the app or filling in this form: <https://bit.ly/SympTrack20>

Embed:</iframe width="640px" height="480px" src="https://forms.office.com/Pages/ResponsePage.aspx?id=-yeCOETeDkaBkAVAK4mNqEy9oaQEKAplji0dvjYKpVUQTINSEYwMINOVUVDSEJHWFJFNETJMU5TRC4u&embed=true" frameborder="0" marginwidth="0" marginheight="0" style="border: none; max-width:100%; max-height:100vh" allowfullscreen webkitallowfullscreen mozallowfullscreen msallowfullscreen></iframe>

## If your child is isolating:

**Report your child's illness:** You can complete an absent form via the app or by submitting this link: <https://bit.ly/SympTrack20>

**Zoom**— Virtual meetings offer a chance to catch up with staff and pupils. Zooms catch-up session will be offered to anyone who are forced to remain at home due to isolate at home due to isolation or illness. Please contact us to arrange a meeting.

**TEAMS** — Work and activities are uploaded regularly here for Homebased Learning if required.

**Devices**--We can lend you a laptop to support homebased learning if you need it.

## AMJR Afterschool Football Coaching

We are restarting some of our afterschool provision and are pleased to be able to offer afterschool football for P2 to P7 pupils on Wednesday afternoons for 6 weeks. P1 pupils will get their turn in September. The coaching team will bring 3 coaches and the children will remain in their class bubbles throughout the sessions.

- P2-P4 session 2:00-3:00
- P5-P7 sessions 3:00-4:00

All sessions will take place outdoors so children need to dress for the weather. If the weather is too wet then the session will be cancelled and rescheduled. We will let you know via the app.

If you wish to book your child on to the 6 week block of after schools football with AMJR please click the link below to register & pay.

There is limited spaces available per bubble & this will come on a “first come, first served” basis.

Follow this link to register now with AMJR Ballyhenry After School.

<https://www.teamfeepay.com/s/oboHLxd>

Any questions or queries contact AMJR Coaching: [andy@amjrcoaching.co.uk](mailto:andy@amjrcoaching.co.uk)

## Staffing Update

We are pleased to welcome back Miss Patton following a leave of absence due to a recent family bereavement. We extend our sincerest sympathy for her loss. While she was off Miss Patton was able to go ahead with a small family wedding. We congratulate her and will be delighted to call her “Mrs. Gibney”. Mrs. Glass and Mrs Gibney will work together as Mrs Gibney’s return to school will be on a phased basis over the next 4 weeks. We would also like to thank Mrs Glass for supporting P3 during lockdown and through their return to school.

## New P1s

We are looking forward to welcoming our new pupils in September 2021. Hopefully, you will have received notification of your child's place via the EA Admissions Hub. We will be emailing all families this week to welcome you to school and to inform you of our tentative plans for induction. If you are uncertain of your child's current admission status or you would like to talk to us about anything, please send me an email [lknocker496@c2kni.net](mailto:lknocker496@c2kni.net). I am happy to help in any way I can.



## Rights Respecting School



We aim to be a school where children's rights are at the heart of our ethos and culture, to improve well-being and to develop every child's talents and abilities to their full potential. As part of this plan we are working towards recognition as a 'Rights Respecting School', an award given to schools on behalf of Unicef UK.

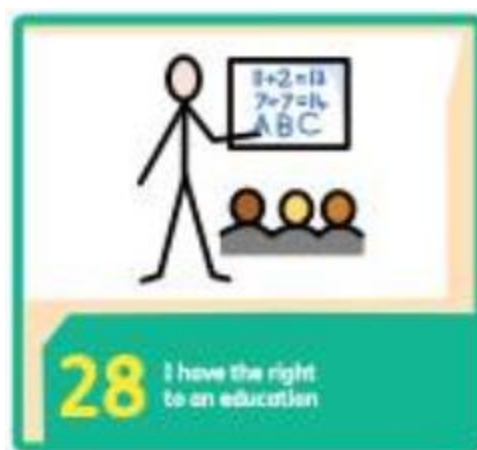
Unicef is the world's leading organisation working for children and young people and their rights. In 1989, governments across the world agreed that all children have the same rights by adopting the UN Convention on the Rights of the Child (UNCRC). These rights are based on what a child needs to survive, grow, participate and fulfil their potential.

Ballyhenry pupils will learn about their rights by putting them into practice every day. A Rights Respecting School models rights and respect in all its relationships. It is a part of the Ballyhenry Way: **SAFE-READY-RESPECTFUL**.

We started on this journey just prior to Lockdown and we are delighted to return our focus. We really hope that you will be able to support our school on our journey towards becoming a Unicef UK Rights Respecting School.

Each week we will be looking at a different Article from the United Nation Convention on the Rights of the Child. This week we will looking at:

**Article 28: I have a right to an education.**



## Breakfast Club and B'Happy

We are delighted to tell you that we can resume wrap around care. This will be done in adherence with Covid-Secure procedures.

### Breakfast Club

Breakfast Club will operate from 8:00-8:45 daily. Children will sit with their class bubble at tables in the assembly hall. They will be served breakfast and be able to play with their class friends. They will be able to watch videos and play games. They will need to stay in their bubble during breakfast club.

Cost: £1.75/session (includes breakfast)

### B'Happy

B'Happy is our after school programme which currently operates from 2:00 to 5:00 daily. Children will go to the hall and play in their class bubbles while indoors. They will be given an afternoon snack. The programme involves stories, games, ICT and outdoor activities. When outdoors children are free to play together. Covid-Secure procedures are in place and children will wash/sanitize their hands between activities. We have altered the system to allow parents/carers to book in 30 minute sessions in order to offer the best service for our families.

Cost: £1.50/30 min session

Traditionally B'Happy operates until 6:00 p.m. but there is currently no demand for this service. If you need help please ring school or email [lknocker496@c2kni.net](mailto:lknocker496@c2kni.net) for help.



## Dinners/Lunches

Lunchtimes will be timetabled to ensure social distancing. Our dinner choices are completed online and delivered to the classroom. It is essential that book your child's meals for the week by Sunday at 9:00 p.m. The kitchen is working on a skeleton staff and as such late bookings will not be accepted. The form will not open after 9:00 p.m. *This week we have extended the time to 9:00 p.m. on Monday as school is closed for staff training on Monday.*



**BOOK DINNERS VIA THE LINK BY 9:00 P.M. ON MONDAY EVENING LATE BOOKINGS FOR DINNERS WILL NOT BE ACCEPTED. <https://bit.ly/PackLunch20>**

Embed://<iframe width="640px" height="480px" src="https://forms.office.com/Pages/ResponsePage.aspx?id=-yeCOETeDkaBkAVAK4mNqEy9oaQEKAPlji0dvjYKpVUQVpFQzJNMzFRMFZVNVVHOVZOVkJHQ1pDQS4u&embed=true" frameborder="0" marginwidth="0" marginheight="0" style="border: none; max-width:100%; max-height:100vh" allowfullscreen webkitallowfullscreen mozallowfullscreen msallowfullscreen></iframe>

## Who is Who!

You may hear your child talking about different adults in their classrooms. As part of our “Restart Plans 2.0” we have put addition staff in place to support the children’s mental health and access to the curriculum. In the coming days the school website will be update with the photos and names of all the staff in each classroom. I would like to welcome our new staff members and thank the Board of Governors for making this possible. Ballyhenry is fortunate to have a dedicated staff who continue to work extremely hard to serve our school community. Why not visit the Ballyhenry Website for more information. <https://www.myballyhenryps.co.uk>



## Returning School Equipment--Equipment Loan

If we have lent you a laptop please keep hold of it in case your child needs to self-isolate. All other materials such as reading books, whiteboard, pens and notebooks should now be returned to school for class use.

We still have Chromebooks available to anyone who needs one! Please use the form below if you require our help.

Embed://<iframe width="640px" height="480px" src="https://forms.office.com/Pages/ResponsePage.aspx?id=-yeCOETeDkaBkAVAK4mNqEy9oaQEKAPlji0dvjYKpVURTgyU01ZQkVUU01QTUEXN1EWIFJWUc1Wi4u&embed=true" frameborder="0" marginwidth="0" marginheight="0" style="border: none; max-width:100%; max-height:100vh" allowfullscreen webkitallowfullscreen mozallowfullscreen msallowfullscreen></iframe>



## Attendance

DENI expects all pupils to return to school except in very special circumstance:

- pupils who have been advised by their medical teams to remain at home;
- pupils who have been required to self-isolate due to Track and Trace Guidelines;
- pupils who have an illness (including COVID-19).

As usual, attendance will be marked on a daily basis. Special arrangements have been made to record attendance for pupils who are learning from home. This includes compelling schools to collect evidence regarding the learning that has taken place. If sufficient evidence is not provided or if a pupil refuses to attend school due to COVID-19 fears schools must record these as Unauthorized Absence.



## Staggered Arrival (Drop and Go)

We resume our staggered arrival procedure. Children can arrive any time between 8:45 and 9:05. Here is a remind you of the procedures:

- Follow social distancing footprints. Adults **MUST** wear masks on entry.
- Hands sanitized on entry;
- Follow the one-way system;
- Temperatures check on entry to the classroom.

Remember anyone who is ill should not be in school. If your child has Covid-19 symptoms the household should self-isolate and a test should be booked.

## Staggered Exit (Meet and Leave)

Departure will be staggered to help ensure social distancing. You will note that we have temporarily altered our dismissal times so that all children will go home each day between 1:55 and 2:20 on Mondays and Fridays. This is to accommodate families as siblings will go home at the same time. Pupils in P5-P7 go home between 2:55 and 3:05 on Tuesdays, Wednesdays and Thursday. The altered times meet the statutory requirements for school hours while reducing the number of additional contacts within our class bubble.

It is essential for **all stakeholders** to maintain social distancing and that adults wear masks.

Covid-19 Procedures include:

- Gates will be locked until 1:45 as outdoor learning may be taking place.
- **Parents/carers must maintain social distancing while waiting to collect their children. Please stand on the designated waiting spots (blue feet), wear a mask and leave the school premises quickly to give room for other families.**
- **Climbing equipment should not be used by younger siblings waiting for collection.**
- **Older children will be dismissed from their class early and move to meet their younger siblings. They must maintain social distancing from others but can be in close proximity with their sibling.**
- **Staff and children will move aside if children are not collected to allow other classes to go out.**
- **Junior Gate will be closed and locked by the P4 teacher at 2:15.**

	Monday	Tuesday	Wednesday	Thursday	Friday
JR Playground	1:55 P1 & Siblings 2:00 P2 & Siblings 2:05 P3 & Siblings 2:10 P4 & Siblings	1:55 P1 2:00 P2 2:05 P3 2:10 P4	1:55 P1 2:00 P2 2:05 P3 2:10 P4	1:55 P1 2:00 P2 2:05 P3 2:10 P4	1:55 P1 & Siblings 2:00 P2 & Siblings 2:05 P3 & Siblings 2:10 P4 & Siblings
SR Playground	2:10 P5 & Siblings 2:15 P6 & Siblings 2:20 P7	2:55 P5 3:00 P6 3:05 P7	2:55 P5 3:00 P6 3:05 P7	2:55 P5 3:00 P6 3:05 P7	2:10 P5 & Siblings 2:15 P6 & Siblings 2:20 P7

## Keep in touch!

We know that working from home can be difficult and we want to provide as much support as we can. Please email [lknocker496@c2kni.net](mailto:lknocker496@c2kni.net) if you need anything. There will be someone at school every weekday from 8:15 to 4:30 p.m.

Remember that we can only do our best and together we will get through this challenging time!

Stay safe,

Mrs. Knocker

## HOLIDAY LIST 2021/2022

### Autumn Term- 2021

School commences: Thursday 26th August (school ends 12pm no dinners)

Friday 27th August (school ends 12pm no dinners)

August Bank Holiday: Monday 30th August (school closed)

School Continues:

Tuesday 31st August (school ends 12pm no dinners)

Exceptional Closure 1: Friday 24th September (school closed)

Exceptional Closure 2: Monday 25th October (school closed)

Halloween: Tuesday 26th October – Friday 29th October (inc)

Christmas: Monday 20th December (half Day \*)

Christmas: Tuesday 21st December – Monday 3rd January 2022 (inc)

### Spring Term- 2022

School recommences: Tuesday 4th January 2022

Exceptional Closure 3: Monday 14th February (school closed)

Half Term: Tuesday 15th February – Friday 18th February (inc)

St Patrick's Day: Thursday 17th March

Exceptional Closure 4: Monday 11th April (school closed)

Easter: Tuesday 12th April – Friday 22nd April (inc)

### Summer Term- 2022

School recommences: Monday 25th April

MAY DAY HOLIDAY: Monday 2nd May

Exceptional Closure 5: Wednesday 1st June (school closed)

Jubilee Holiday: Thursday 2nd June – Friday 3rd June (inc)

End of School year: Thursday 30th June (half day \*)

\* Half Day- School closes at 12.00 pm (No Dinners).

The above holiday dates are all inclusive and subject to change.